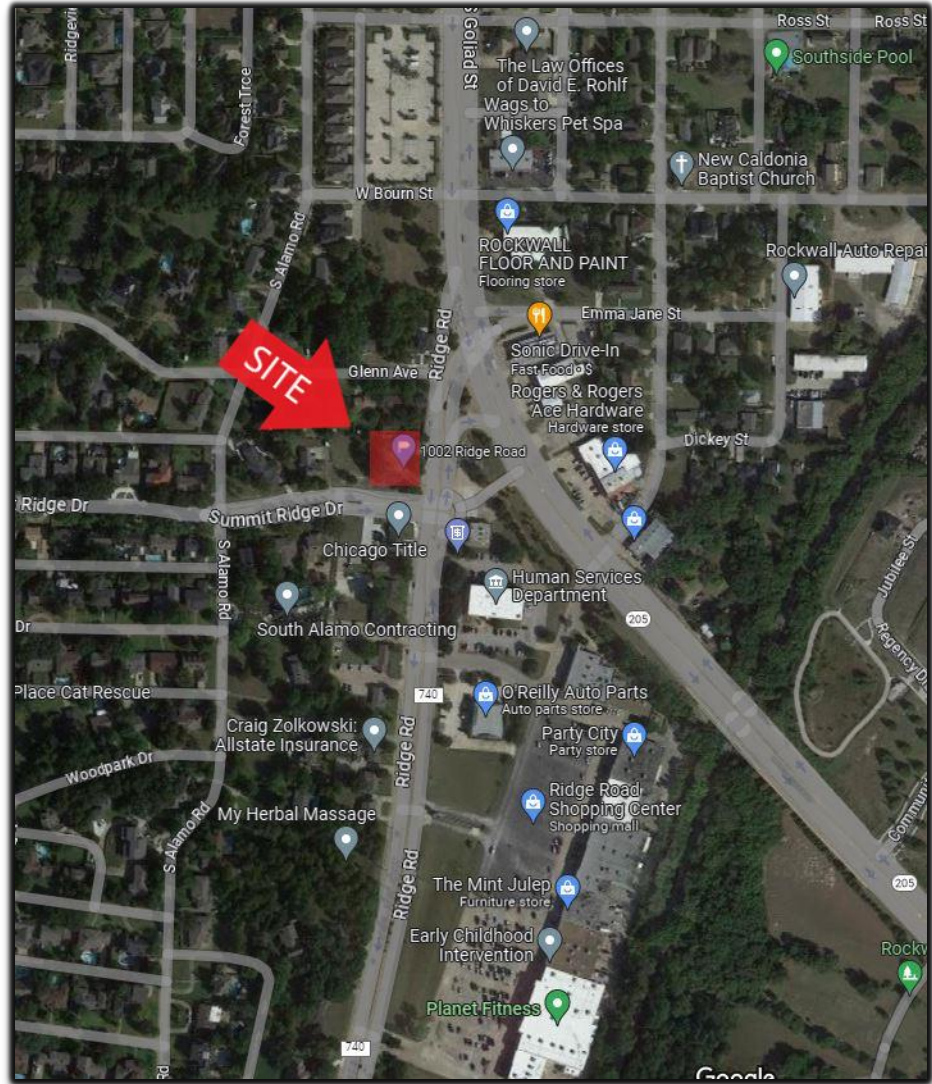


# RIDGE POINTE commercial real estate

FOR SALE

1002 RIDGE RD, ROCKWALL, TX 75087



Location: 1002 Ridge Rd, Rockwall, TX 75087  
 NWC of Ridge @ Summit Ridge  
 Size: .651 ac (28,339 sf)  
 Zoned: RO – Residential Office  
 Price: Call Broker

Variable	1 mile	3 mile	5 mile
2022 POPULATION	7,264	46,499	117,733
5 Yr PROJ. GROWTH	9,314	59,482	142,453
AVG. HH INCOME	\$90,799	\$126,375	\$133,517

for more information, please contact David English

972-961-8532 (o) · 214-676-6424 (m) · [denglish@ridgepcr.com](mailto:denglish@ridgepcr.com) · [ridgepcr.com](http://ridgepcr.com)

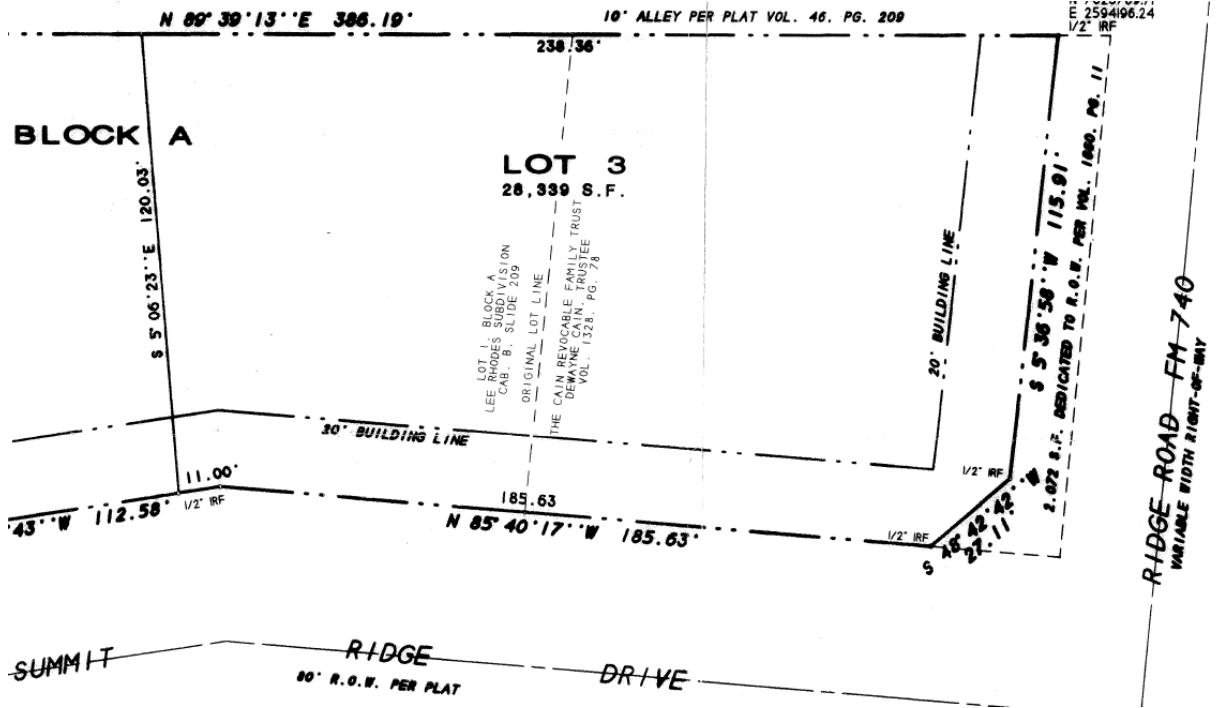
The information contained herein was obtained from sources believed reliable, however, Ridge Pointe Commercial Real Estate ("Licensee") makes no guarantees, warranties or representations as to the completeness or accuracy thereof. The presentation of this property is subject to errors, omissions, change of price or conditions, prior sale or lease or withdrawal without notice. Texas law requires licensee to disclose that it is representing the Seller/Landlord in the marketing of this property.

# RIDGE POINTE

commercial real estate

FOR SALE

1002 RIDGE RD, ROCKWALL, TX 75087



for more information, please contact David English

972-961-8532 (o) · 214-676-6424 (m) · denglish@ridgepcr.com · ridgepcr.com

The information contained herein was obtained from sources believed reliable, however, Ridge Pointe Commercial Real Estate ("Licensee") makes no guarantees, warranties or representations as to the completeness or accuracy thereof. The presentation of this property is subject to errors, omissions, change of price or conditions, prior sale or lease or withdrawal without notice. Texas law requires licensee to disclose that it is representing the Seller/Landlord in the marketing of this property.



## Permitted Land Uses in a Residential-Office (RO) District

Date: March 17, 2014

P: Permitted by Right; S: Permitted by Specific Use Permit; A: Permitted Accessory to the Primary Use; Blank: Not Permitted; <sup>1</sup>: Additional Requirements

Rural & Animal-Related	
Agricultural Uses on Un-Platted Land	P
Residential & Lodging	
Accessory Building <sup>1</sup>	P
Bed & Breakfast Operation <sup>1</sup>	P
Convent or Monastery	P
Garage	A
Home Occupation <sup>1</sup>	P
Residential Care Facility	S
Single Family, Detached <sup>1</sup>	P
Single Family, Zero Lot Line <sup>1</sup>	P
Swimming Pool, Private	A
Tennis Court Private	S
Townhouse	P
Institutional & Community Service	
Assisted Living Facility <sup>1</sup>	P
Convalescent Care Facility/Nursing Home <sup>1</sup>	P
Day Care (7 or More Children) <sup>1</sup>	S
Group or Community Home <sup>1</sup>	P
Halfway House <sup>1</sup>	S
Library, Art Gallery or Museum (Public)	P
Office & Professional	
Office, General	P
Office Building, less than 5,000 Sq. Ft.	P
Office Building, 5,000 Sq. Ft. or more	S
Recreation, Entertainment & Amusement	
Fund Raising Events by Non-Profit, Indoor or Outdoor, Temporary <sup>1</sup>	P
Retail & Personal Services	
Astrologer, Hypnotist, or Psychic Art and Science	P
General Retail Store	S
Hair Salon, Manicurist	S
Massage Therapist	P
Museum or Art Gallery (Private)	P
Restaurant, Less than 2000 Sq. Ft., w/o Drive-Thru or Drive-in	S
Studio - Art, Photography or Music	P
Commercial & Business Services	
Shoe and Boot Repair and Sales	S
Utilities, Communications & Transportation	
Antenna, Accessory <sup>1</sup>	P
Antenna, Dish <sup>1</sup>	A
Railroad Yard or Shop	S

for more information, please contact David English

972-961-8532 (o) · 214-676-6424 (m) · [denglish@ridgepcr.com](mailto:denglish@ridgepcr.com) · [ridgepcr.com](http://ridgepcr.com)

Information contained herein was obtained from sources believed reliable, however, Ridge Pointe Commercial Real Estate ("Licensee") makes no guarantees, warranties or representations as to the completeness or accuracy thereof. The presentation of this property is subject to errors, omissions, change of price or conditions, prior sale or lease or withdrawal without notice. Texas law requires licensee to disclose that it is representing the Seller/Landlord in the marketing of this property.