

FOR LEASE

2740 & 2754 Hwy 276, ROCKWALL, TX 75032



SIZE: 2740 HWY 276 – 5,500 SF BLDG
2754 HWY 276 – 6,000 SF BLDG

AVAILABLE: 2754 HWY 276
SUITE 200 – 1,329 PSF UNFINISHED SPACE

RATE: CALL BROKER

HIGHLIGHTS: GREAT VISIBILITY ON HWY 276
CURRENT TENANTS: STOR-N-MORE, ALLSTATE,
TIMBERCREEK ANIMAL HOSPITAL, K-9 SALON

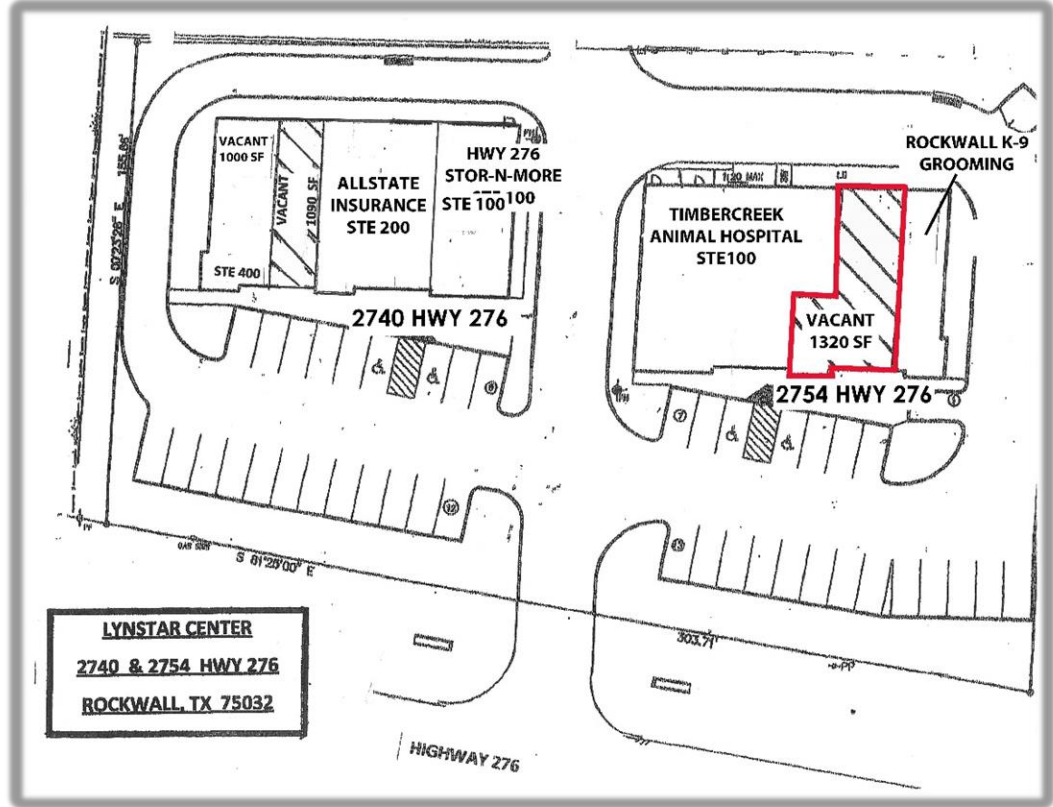
TRAFFIC COUNTS: HWY 276: 19,416 VPD
INTERSTATE 30 : 80,547 VPD

for more information, please contact David English or Grant English • 972-961-8532 (o)
214-676-6424 (c) • denglish@ridgepcre.com • 214-577-8627 • genglish@ridgepcre.com
ridgepcre.com

FOR LEASE

2740 & 2754 Hwy 276, ROCKWALL, TX 75032

SITE PLAN



for more information, please contact David English or Grant English • 972-961-8532 (o)
214-676-6424 (c) • denglish@ridgepcr.com • 214-577-8627 • genglish@ridgepcr.com
ridgepcr.com

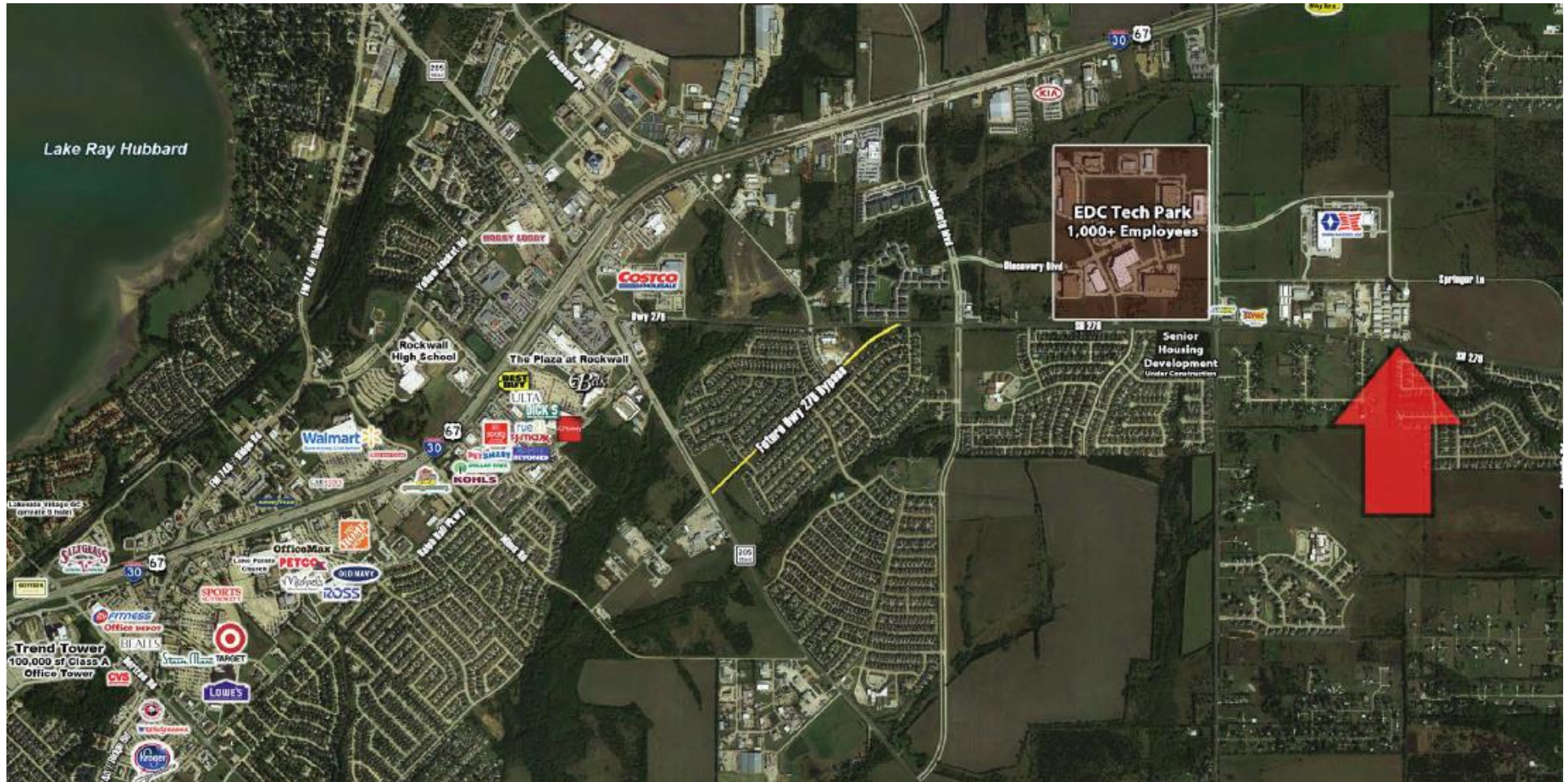
The information contained herein was obtained from sources believed reliable, however, Ridge Pointe Commercial Real Estate ("Licensee") makes no guarantees, warranties or representations as to the completeness or accuracy thereof. The presentation of this property is subject to errors, omissions, change of price or conditions, prior sale or lease or withdrawal without notice. Texas law requires licensee to disclose that it is representing the Seller/Landlord in the marketing of this property.

FOR LEASE

2740 & 2754 HWY 276, ROCKWALL, TX 75032

FOR LEASE

2740 & 2754 Hwy 276, ROCKWALL, TX 75032



RIDGE POINTE

commercial real estate

for more information, please contact David English or Grant English • 972-961-8532 (o)
214-676-6424 (c) • denglish@ridgepcre.com • 214-577-8627 • genglish@ridgepcre.com
ridgepcre.com